

POSTMIGRATE

The Afferent Software Switch Tools are a suite of electronic payment switch management tools, which have been developed to make maintenance of these environments simpler, more effective and more efficient. The current suite of products includes tools optimized for the maintenance of ACI Worldwide's Postilion Realtime™ payments switch, and include:

- Switch Tools PostClone
- Switch Tools PostMigrate, and
- Switch Tools PostFlow

The PostMigrate tool is a concise but extremely useful tool which is designed to allow for the extraction, and then re-insertion (of the same or modified) ATM downloads back into a Postilion ATMAApp datasource. The utility therefore makes migration as well as development of new download applications significantly easier than was previously the case by producing intuitive and modifiable SQL scripts which can then be easily used to update, as well as migrate download applications.

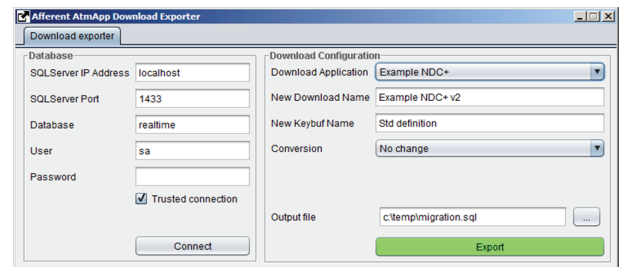
A typical workflow might be:

- 1) Connect to the target Realtime datasource
- 2) Extract the target download for migration, or modification (i.e. for use as a base for a new and / or updated download)
- 3) Edit the download manually in the generated SQL scripts, or re-insert the re-named download into the former (or new) Realtime environment, and continue to update the download using the Realtime Postilion Download Builder application

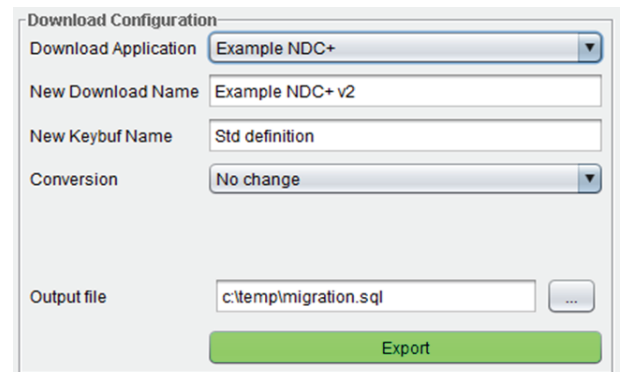
Re-inserted (i.e. migrated) downloads, can be removed from the target datasource by utilizing the provided rollback script generated during the initial extraction process.

The application can be driven locally, connecting to the remote download datasource via TCP (i.e. network) connection, and offers both Trusted (Windows™) and traditional Username / Password authentication.

Options available during the migration (i.e. export) procedure, include selection of the available download applications from a prepopulated drop down menu, insertion of a new name for the modified download, insertion of a new name for the re-inserted key buffer and upgrading of the download application from ATMAApp v3.x -> v5.x or downgrading of the download application from ATMAApp v5.x -> v3.x.



OVERVIEW OF SWITCH TOOLS POSTMIGRATE UTILITY CONSOLE



DOWNLOAD MIGRATION CONTROLS



DATASOURCE LOGIN CONTROLS

FEATURES

Feature	Details	Comments
Login	Username / password via TCP	Standard remote username / password login
	Trusted	Windows authentication-based login
Supported ATMAApp versions	v3.x	
	v5.x	
Script generation	Migration script (SQL)	Script for inserting new download into new (or existing datasource)
	Rollback script (SQL)	Script for rolling back migration
Download modifications	Rename download	Ability to change name of download to be migrated
	Rename keybuffer	Ability to change name of key buffers in migrated download
Format conversions	Ability to convert script formats	ATMAApp v3.x to v5.x
		ATMAApp v5.x to v3.x

OUTPUT

The outputs of PostMigrate are a pair of Structured Query Language (SQL) scripts, including:

- The insertion script, and
- The rollback script

The insertion script may be used to generate / insert the extracted and / or modified download application into a new or existing datasource, while the rollback script allows for 'cleaning' up of a stalled migration insertion, due to incorrect download configuration / modification.

Since both scripts are made available as SQL (*.sql) script types, both scripts may be run interactively via a SQL query editor frame.

```
-- Generated by Afferent ATMAApp download exporter
-- Script type: No change
-- Original download application: Example NDC+
-- New download application: Example NDC+ v2
-- Original keybuffer profile: Std definition
-- New keybuffer profile: Std definition

insert into ata_keybuf_profiles (good_track_write_keybuf, no_track_write_keybuf, print_next_state_keybuf, profile, bad_track_write_keybuf, pin_change_1_keybu
insert into ata_dl_app (app, screen_data_1_mgmt, icc_ncr_tran_placeholder, keybuf_profile, screen_data_2_consumer, invalid_card_fit_selection_key, screen_nr_
insert into ata_keybuf (from_account_qualifier, rcv_inst_code, reverse_non_ok, screen_nr_1, screen_nr_2, to_acct_sel, payee_id, screen_data_1, to_account_qu
insert into ata_keybuf (from_account_qualifier, rcv_inst_code, reverse_non_ok, screen_nr_1, screen_nr_2, to_acct_sel, payee_id, screen_data_1, to_account_qu
insert into ata_keybuf (from_account_qualifier, rcv_inst_code, reverse_non_ok, screen_nr_1, screen_nr_2, to_acct_sel, payee_id, screen_data_1, to_account_qu
insert into ata_keybuf (from_account_qualifier, rcv_inst_code, reverse_non_ok, screen_nr_1, screen_nr_2, to_acct_sel, payee_id, screen_data_1, to_account_qu
insert into ata_keybuf (from_account_qualifier, rcv_inst_code, reverse_non_ok, screen_nr_1, screen_nr_2, to_acct_sel, payee_id, screen_data_1, to_account_qu
insert into ata_keybuf (from_account_qualifier, rcv_inst_code, reverse_non_ok, screen_nr_1, screen_nr_2, to_acct_sel, payee_id, screen_data_1, to_account_qu
insert into ata_dl_loadsets (app, loadset_priority, loadset) values ('Example NDC+ v2', '4', 'Administration')
insert into ata_dl_loadsets (app, loadset_priority, loadset) values ('Example NDC+ v2', '7', 'Alt media - GBP')
insert into ata_dl_loadsets (app, loadset_priority, loadset) values ('Example NDC+ v2', '5', 'Alt Media, Dual Cur..')
insert into ata_dl_loadsets (app, loadset_priority, loadset) values ('Example NDC+ v2', '5', 'Alternate media')
insert into ata_dl_loadsets (app, loadset_priority, loadset) values ('Example NDC+ v2', '4', 'BNA Deposit')
insert into ata_dl_loadsets (app, loadset_priority, loadset) values ('Example NDC+ v2', '4', 'Bulk Check CPM')
insert into ata_dl_loadsets (app, loadset_priority, loadset) values ('Example NDC+ v2', '5', 'Card Before Cash')
insert into ata_dl_loadset_groups (app, version_nr, ncr_voice_config, loadset_group) values ('Example NDC+ v2', '2001', null, 'Administration')
insert into ata_dl_loadset_groups (app, version_nr, ncr_voice_config, loadset_group) values ('Example NDC+ v2', '2006', null, 'Alt media - GBP')
insert into ata_dl_loadset_groups (app, version_nr, ncr_voice_config, loadset_group) values ('Example NDC+ v2', '2009', null, 'Card Before Cash')
insert into ata_dl_loadset_groups (app, version_nr, ncr_voice_config, loadset_group) values ('Example NDC+ v2', '2002', null, 'Dual Currency')
insert into ata_dl_loadset_groups (app, version_nr, ncr_voice_config, loadset_group) values ('Example NDC+ v2', '2011', null, 'Full Statements')
insert into ata_dl_loadset_groups (app, version_nr, ncr_voice_config, loadset_group) values ('Example NDC+ v2', '2008', null, 'Receipt Prompt')
insert into ata_dl_loadset_selection (app, version_nr, ncr_voice_config, loadset_group) values ('Example NDC+ v2', '2007', null, 'Single transaction')
insert into ata_dl_loadset_selection (app, loadset_group, loadset) values ('Example NDC+ v2', 'Administration', 'Administration')
insert into ata_dl_loadset_selection (app, loadset_group, loadset) values ('Example NDC+ v2', 'Receipt Prompt', 'Receipt Prompt')
insert into ata_dl_loadset_selection (app, loadset_group, loadset) values ('Example NDC+ v2', 'Receipt Prompt', 'Standard')
insert into ata_dl_loadset_selection (app, loadset_group, loadset) values ('Example NDC+ v2', 'Single transaction', 'Not-on-us trans')
insert into ata_dl_loadset_selection (app, loadset_group, loadset) values ('Example NDC+ v2', 'Single transaction', 'On-us trans')
insert into ata_dl_loadset_selection (app, loadset_group, loadset) values ('Example NDC+ v2', 'Single transaction', 'Single transaction')
insert into ata_dl_loadset_selection (app, loadset_group, loadset) values ('Example NDC+ v2', 'Standard')
insert into ata_dl_states (app, state_nr, state_data, description, loadset) values ('Example NDC+ v2', '241', 'D070255000000120000000000', 'Set alt media - G
insert into ata_dl_states (app, state_nr, state_data, description, loadset) values ('Example NDC+ v2', '040', 'E029140002260270255255007', 'Cur. select withd
insert into ata_dl_states (app, state_nr, state_data, description, loadset) values ('Example NDC+ v2', '043', 'H1114009225241043255003', 'Alt med - max exc
insert into ata_dl_states (app, state_nr, state_data, description, loadset) values ('Example NDC+ v2', '044', 'H11314009225241044255003', 'Alt med - less no
insert into ata_dl_states (app, state_nr, state_data, description, loadset) values ('Example NDC+ v2', '203', 'D0700630520000020000000000', 'Inquiry from cher
insert into ata_dl_states (app, state_nr, state_data, description, loadset) values ('Example NDC+ v2', '204', 'D0700630200400020000000000', 'Inquiry from card
```

SAMPLE DOWNLOAD INSERTION SCRIPT