

POSTCLONE

The Afferent Software Switch Tools are a suite of electronic payment switch management tools, which have been developed to make maintenance of these environments simpler, more effective and more efficient. The current suite of products includes tools optimized for the maintenance of ACI Worldwide's Postilion Realtime™ payments switch, and include:

- Switch Tools PostClone
- Switch Tools PostMigrate, and
- Switch Tools PostFlow

PostClone is an all-in-one Postilion backup and restoration utility which is designed to provide a complexity free Postilion Realtime back-up and migration tool. Using the PostClone utility, an export of a Postilion environment can be generated with minimal complexity using intelligent pre-configured defaults, but also allowing for detailed customization if desired. The generated export includes all Postilion applications, selected system registry values and the Realtime database with selected tables only, as well as all system environmental variables.

The export feature of PostClone can be used to produce periodic backups of the Postilion system for system redundancy, or it can be used in conjunction with the PostClone deploy feature to restore a previously exported installation to revert the current installation or migrate the installation to a new server environment.

EXPORT

The Export panel is used to generate a zip file containing the Postilion applications, registry entries and Realtime database tables. Partial exports can be configured by selecting the system subcomponents of Postilion that the user wishes to export on the left-hand side pane, as well as toggling all components using the Toggle selection button.

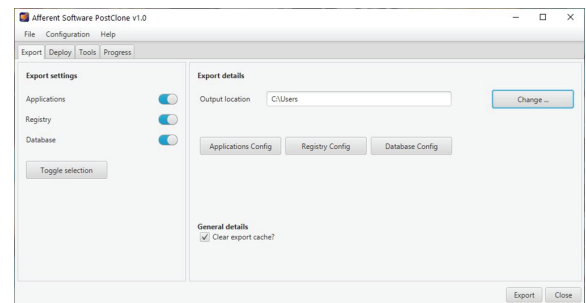
After choosing an output location, additional configuration settings for the Applications, Registry and Database export subcomponents are available by clicking on the respective configuration buttons on the right-hand side panel. Using these configuration buttons, the location of the Postilion applications as well as the registry entries pertaining to these applications are defined. The login details for the realtime database are entered (or a trusted login is used if PostClone is running on the Postilion system) and then tables for which data is to be exported are selected, as shown below.

DEPLOY

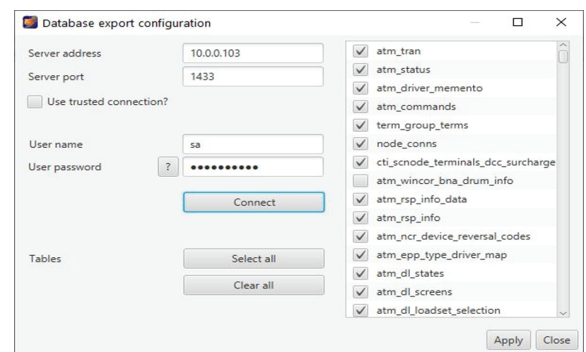
The Deploy panel contains the general options related to the redeployment of a previously exported system, including:

- Optional configuration of the application redeployment location
- Connection details to the target datasource to rebuild the Realtime database on
- Options to clear and / or use the deployment cache (decompressed temporary folder)

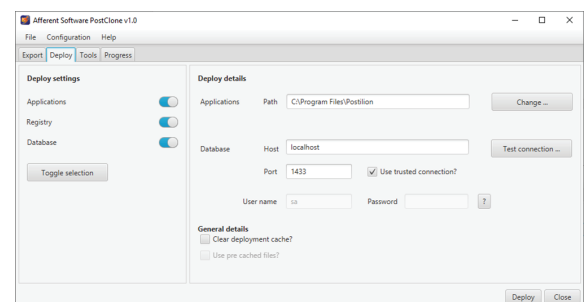
A datasource connection tester function is also included. As with the extraction configuration, deployment can be limited to any combination of an extracted system's subcomponents, using the toggle options on the left-hand side panel.



EXPORT CONTROL PANEL



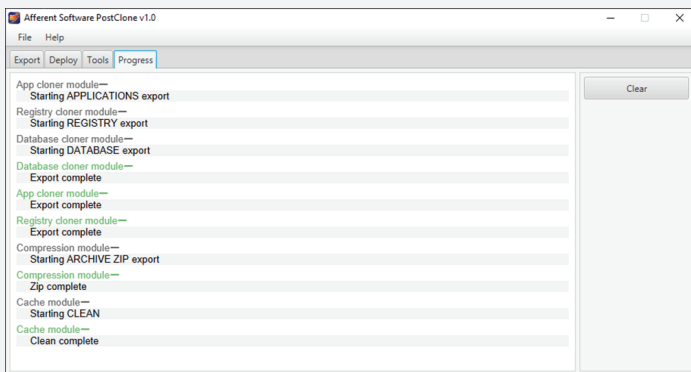
DATASOURCE EXPORT CONTROLS



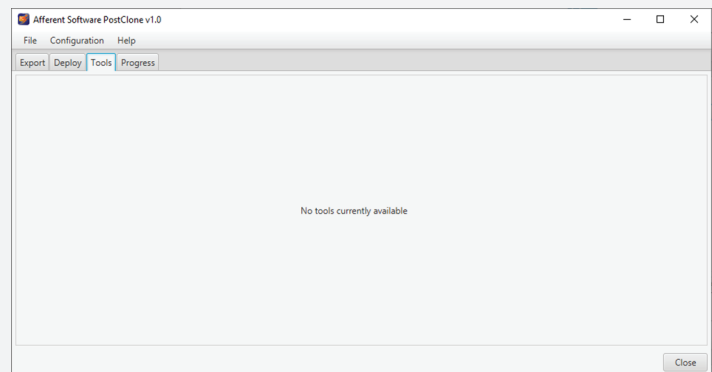
DEPLOY CONTROL PANEL

PROGRESS

A realtime updating console panel is available from the Progress panel, which is designed to track the export and / or subsequent deployment of a previously exported installation. This is useful in order to track the progress during export and deployment operations (and the status of each sub operation) which, depending on the size of the installation being exported / deployed, may be reasonably lengthy operations.



PROGRESS (LOGGING) PANEL



TOOLS (PLUG-IN) PANEL

TOOLS

The Tools panel of the PostClone utility is a unique extension mechanism to the baseline software. This framework allows for standard as well as user-customized software plug-ins to be added in order to add additional, as well as customize existing functionality to the base product.

The plugin framework has been designed to be runtime configurable, where available plugins are loaded at runtime, and may additionally be enabled or disabled prior to export or deployments being activated.

Examples of plug-ins which could be utilized include:

- Security configuration checking extensions, or
- A tool used to compare a recent and previously extracted deployment – useful for isolating any changes which may have occurred between backups

FEATURES

Feature	Details	Comments
Base	Compressed output	The final output is compressed into a zip archive.
	Clear all export / deploy cached files	Choose to clear or keep cached files after an export / deploy is complete.
	View progress of export / deploy	View the current completion progress in a progress log panel.
Export	Configurable export options	Export the Realtime database, Postilion applications and registry entries, or any combination of the three.
	Export only selected Realtime database tables.	Only data from selected Realtime tables will be exported.
	Include environment variables	Choose to include or exclude system environment variables from the export.
	Configure registry values to export	Choose to export the default registry entries or select your own values.
Deployment	Configurable deploy options	Choose to deploy the Realtime database, Postilion applications and registry entries, or any combination of the three.
Extensibility	Plug-in tools framework	A plug-in framework provides the ability to develop custom tools for use during application execution.

OUTPUTS

The output of a system export is a highly compressed, portable “zip” archive, in which all the selected subcomponents selected for export are contained.

The generated archive is labelled with a time-accurate timestamp of the initiation time of the export, for handy filtering when multiple exports are stored in a “backup” folder.

The raw exported data contained within a system backup archive, may be inspected by opening the archive using any “zip” enabled decompression tool and inspecting the various subfolders within the parent archive, including:

- The exported applications
- Registry data
- Database table and configuration data

Name	Type	Compressed size	Password ...	Size	Ratio	Date modified
apps	File folder					
reg	File folder					
sql	File folder					

Backup archive contents (Apps, Registry and Datasource subcomponents)